



Construction RV *Adriaen Coenen*



Progress report #13: March 2022

The RV *Adriaen Coenen* is a new shipbuilding project for the Dutch national research fleet. The fleet is owned and operated by the National Marine Facilities (NMF), a department of the Royal Netherlands Institute for Sea Research (NIOZ). The NMF fleet consists of three vessels capable of conducting research from the shallow coastal waters out into the open ocean.

The RV *Adriaen Coenen* is intended to replace the Wadden Sea research vessel RV *Stern*, and with its shallow draught of 1 meter it is specifically designed for day trips for research in the Wadden Sea or the Zeeland delta.

With a permanent crew of one, the RV *Adriaen Coenen* will offer state-of-the-art daytime facilities for a maximum of 12 passengers, and is equipped with rudimentary dry and wet lab facilities. The deck will also facilitate all of the research activities that an A- and a J-frame can offer.

The RV *Adriaen Coenen* is being built by Next Generation Shipyards in Lauwersoog, and will be delivered in mid-2022.

@ResearchFleetNL



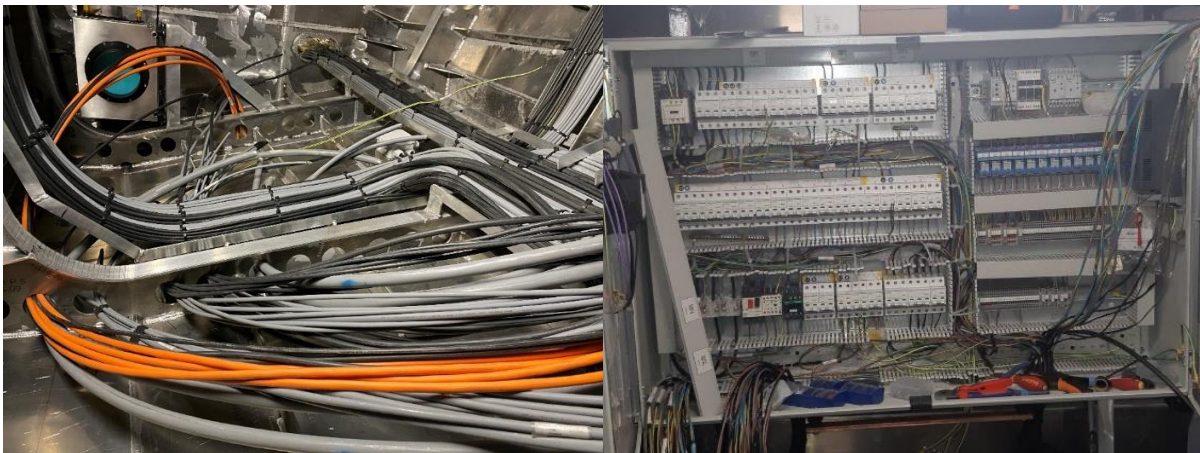
Superstructure

The construction of the RV *Adriaen Coenen's* hull has entered its final phase. That is clearly visible in the wheelhouse and forecastle, where the interior carpentry is starting to take shape, and in the engine room with the installation of various equipment.

All of the supplies needed for the installations are in stock or being delivered, except for the drive shafts and hydrojets.

But the delivery of the Hamilton hydrojets from New Zealand seems to be running according to schedule.

Cabling



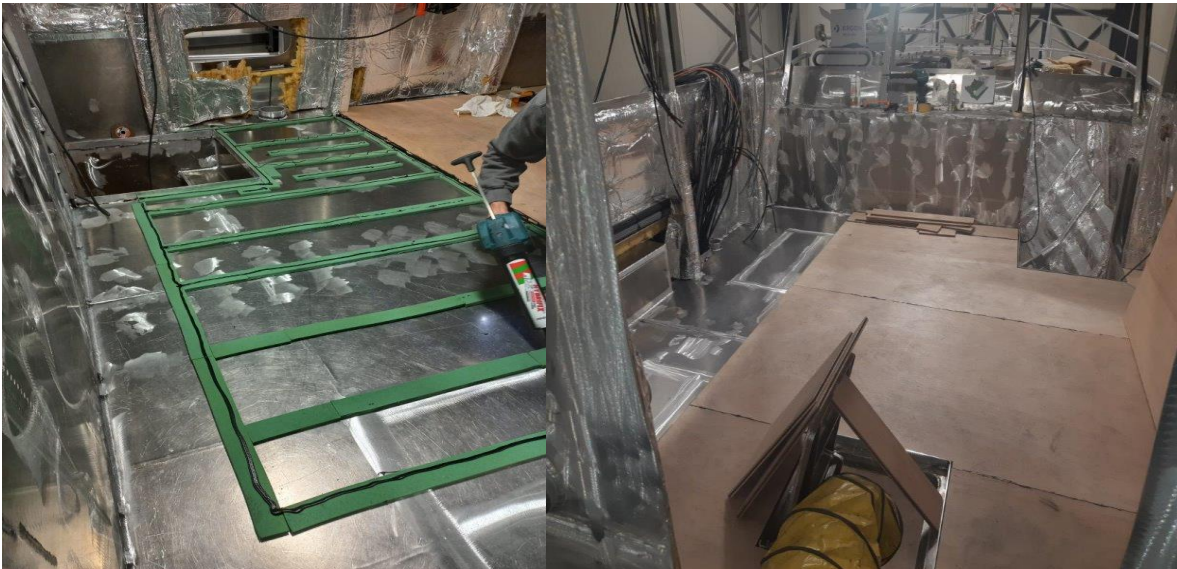
The nest of cables in all shapes and sizes is starting to get organised, and most are now connected to their various outlets.

The installation of various systems and equipment is starting to take shape.

The cables needed for control and electronic monitoring of the equipment have largely been stowed away and connected to the distribution boxes on board.

Wheelhouse and forecastle

Builders have started work on the raised deck in the forecastle and wheelhouse.



*State of affairs in late march. The raised deck has been installed in the wheelhouse.
The deck's structure also aids in noise reduction. ©PG*

Several interior modules, such as seats, tables, a console, cabinets and a galley counter, are currently being prepared for installation.

Engine room

All of the supplies needed for the engine room is in stock and ready for installation, except for the drive shafts and hydrojets. Large objects, like the main engines, will be installed at the last possible moment to keep the hull interior accessible for other work.



The various piping systems in the engine room.

Working deck

The A-frame has been temporarily installed on the working deck to make room for the foundation and the hydraulic cylinders. The definitive installation of the A-frame will wait until the last possible moment.



The A-frame at the stern of the RV Adriaen Coenen.

For more information, please visit: www.NewResearchFleet.nl