

New build RV *Wim Wolff*



Progress report #11: December 2021

The RV *Wim Wolff* is a new shipbuilding project for the Dutch national research fleet. The fleet is owned and operated by the National Marine Facilities (NMF), a department of the Royal Netherlands Institute for Sea Research (NIOZ). The NMF fleet consists of three vessels capable of conducting research from the shallow coastal waters out into the open ocean.

The RV *Wim Wolff* is intended to replace the Wadden Sea research vessel RV *Navicula*, and with its shallow draught of 1 meter it is specifically designed for overnight voyages for research in the Wadden Sea, the Zeeland delta or the coastal zone.

With a permanent crew of four, the RV *Wim Wolff* will offer state-of-the-art facilities for a maximum of 12 passengers, and is equipped with onboard dry and wet lab facilities. The vessel also has room for two customised lab containers on the working deck.

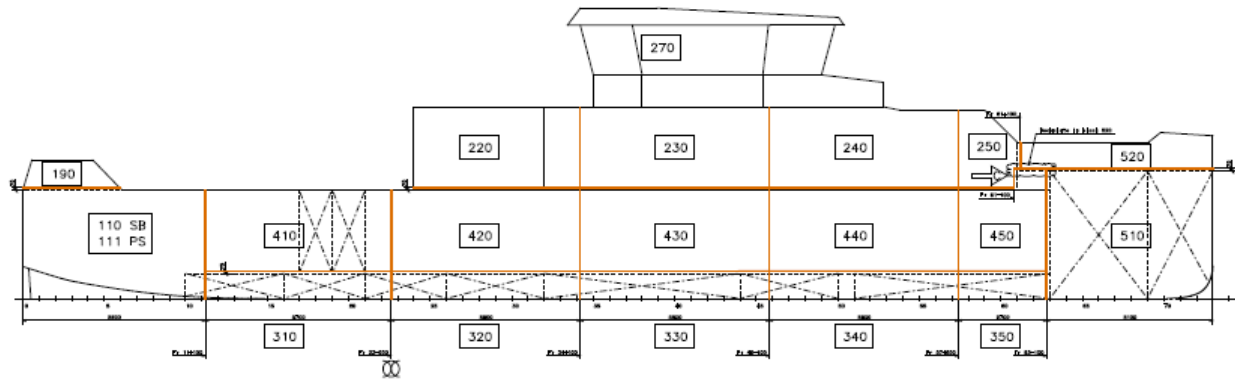
The RV *Wim Wolff* will be built by Thecla Bodewes Shipyards (TBSY) in Harlingen, and is scheduled for delivery in late 2022.

Hull construction

Thecla Bodewes Shipyards (TBSY) has contracted with specialist aluminium shipbuilders for the construction of the aluminium hull of the RV *Wim Wolff*. Due to the size of the RV *Wim Wolff*, the hull has been assembled in individual sections, which will be joined together at a centralised location.

TBSY has contracted with three shipbuilders in the region for the construction of the various hull sections: N. Dijkstra Metaalbewerking in Harlingen, KB Alubouw in Makkum and Alubouw Fryslan in Franeker.

Contracting with several builders for the individual sections and joining them together at N. Dijkstra can reduce the total construction time, which makes it possible to keep to the original schedule.



The hull is divided into around 20 sections with a maximum length of 6 meters. The wheelhouse and three other sections will be built by Alubouw Fryslan. KB Alubouw will build three sections, and the remaining 12 will be assembled by N. Dijkstra.

Current state of affairs in late December:

N. Dijkstra: 1 section almost complete, 1 section under construction;

KB Alubouw: 1 section complete, 2 sections under construction;

Alubouw Fryslan: 1 section almost complete, 2 section under construction.

Once the sections are complete, N. Dijkstra Metaalbewerking in Harlingen will join them all together. N. Dijkstra is currently hard at work on a new expansion, where the hull will be assembled in a few months.



Construction of section 250 at KB Alubouw in Makkum. The porthole openings for the future mess are clearly visible ©R de Vries

All of the shipyards were closed for two weeks for the winter holidays in December, which left them less time to work on the vessel. Production has also been hindered by COVID infections among the hull builders' staff.

Fortunately, almost all of the blueprints for the remaining sections are ready for production.

Preparations and plans for the construction work with the subcontractors are taking shape, and most of the necessary equipment has been sourced from suppliers.

For more information, please visit: www.NewResearchFleet.nl.