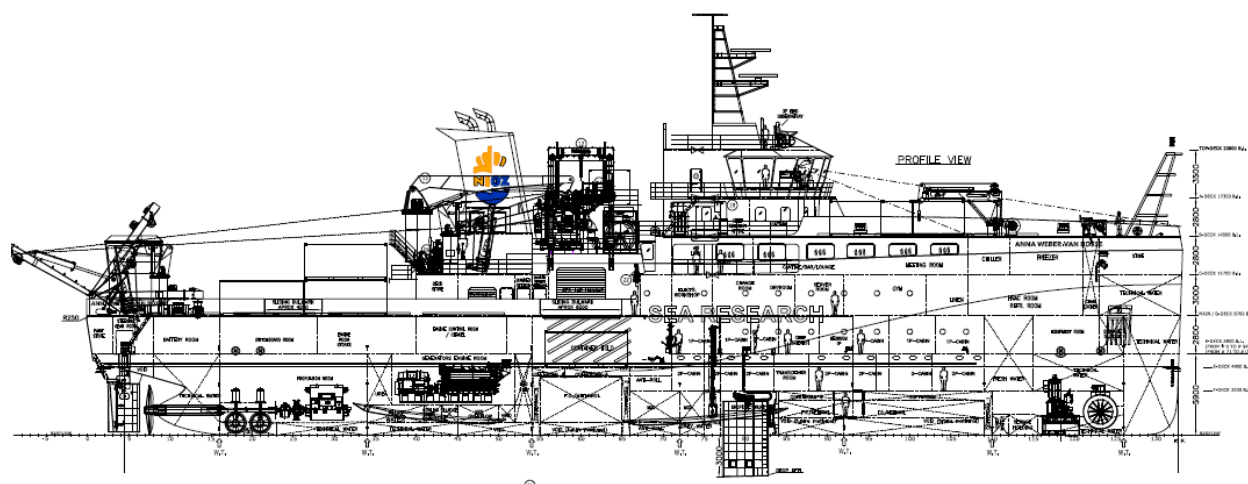


Construction RV *Anna Weber-van Bosse*



Progress report #16: June/July 2024

INTRODUCTION

When it is complete, the RV *Anna Weber-van Bosse* will serve as the ocean-going research vessel for the Netherlands' national research fleet. The fleet is owned and operated by the National Marine Facilities (NMF), a department of the Royal Netherlands Institute for Sea Research (NIOZ). The NMF fleet consists of three vessels capable of conducting research from the shallow coastal waters out into the open ocean. The *Anna Weber-van Bosse* will be built by Astilleros Armon in Vigo, Spain as hull number 147. Delivery is scheduled for late 2025.

A LOOK BACK OVER THE PAST MONTH

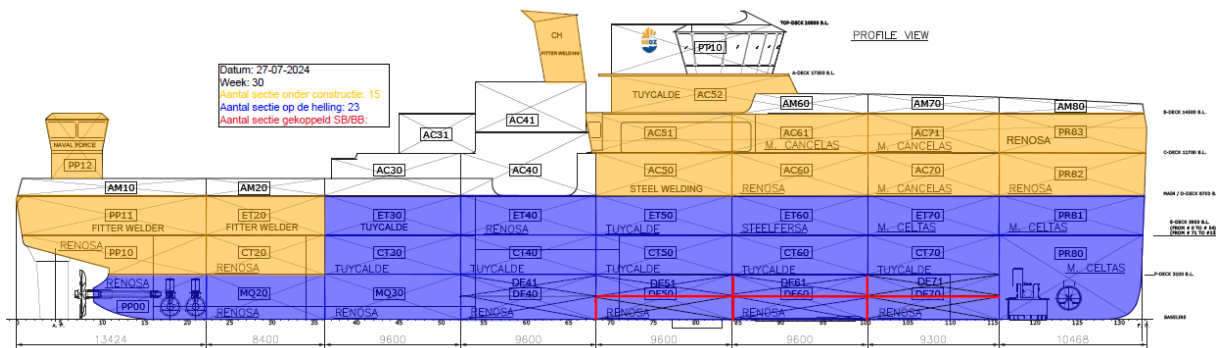
No monthly report was published during the summer holidays, so this report will describe the events that took place in June and July. In the weeks of 10 June and 15 July, the team visited the shipyard for the regularly scheduled meetings and on-board inspections. The NIOZ board visited the shipyard in week 25.

During the visit in June, the team also visited the supplier of stainless steel piping, Pipeworks. Most of the stainless steel pipes are needed to transport methanol from the tanks to the valves and pump room. Some of these pipes will be double-walled. During July's visit, the carpenter visited the yard to give a presentation on the updated renders, which have been edited to process our comments. The revised design is beginning to take shape, and complements the house style that the NIOZ has chosen for its new vessels.

We have also expanded the staff of the inspection team on location in Spain. An extra inspector will join the inspector currently permanently on-site in Vigo, to provide enough supervision as the work load increases.

PROJECT STATUS

The shipyard is hard at work manufacturing the sections, and the sections highlighted in yellow below are currently in production throughout the yard. The sections highlighted in purple have been accepted by the NIOZ and placed on the slipway.

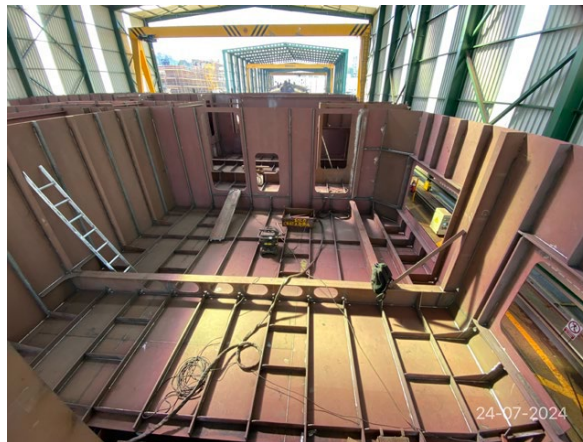


The entire lower layer of sections are now in position on the slipway, so the hull has almost reached its full length. The entire vessel below the water line is now in production. Only the wheelhouse will be added after the launch; the rest will be positioned and attached while the hull is on the slipway.

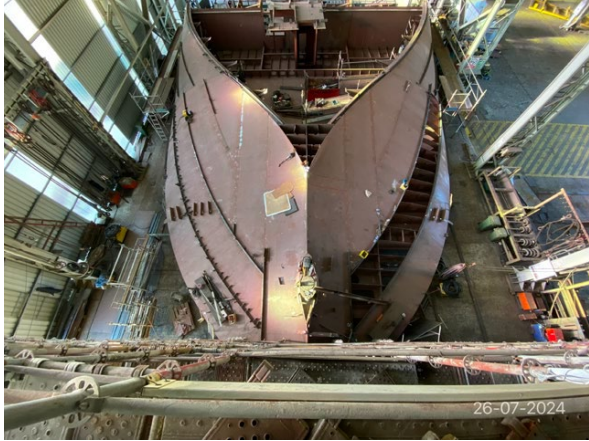
The photos below show some of the sections currently under construction and a general overview of the production facility.



ET30 engine room with ECR ready for assembly



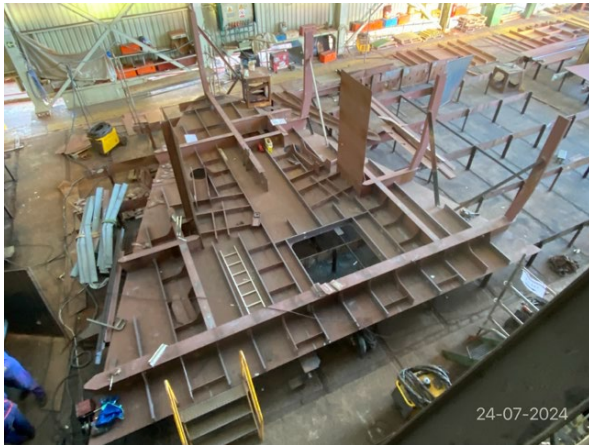
AC51



CT20 and PP10



PR82 with chain/anchor locker



PR83



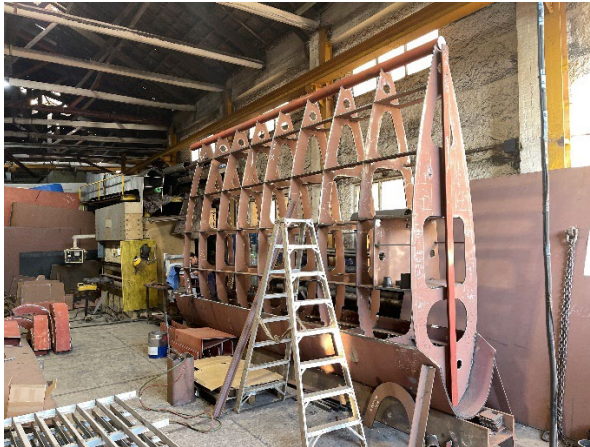
CH Funnel



Engine mounts installed



Multi-beam housing to be installed



Drop keel



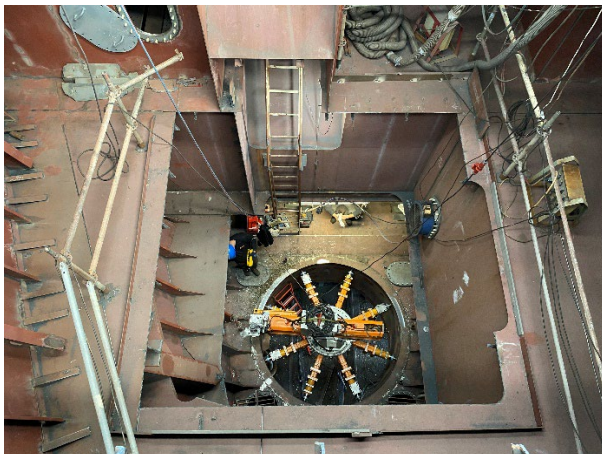
Main propeller



ABC 8-cylinder generator set



ABC 6 cylinder generator set



Milling/boring pumpjet mount



Delivery of the Multidrive in Bilbao



General overview of the production facility, with the drive shaft section.



Current status of the 3D model

SCHEDULE FOR THE MONTH AHEAD

A visit to Kongsberg in Norway is scheduled for week 34 to discuss the time frame for the delivery of the navigation and communication system. The online meetings with the shipyard via Teams and the regular in-person visits will continue as scheduled, so that we can monitor progress on the vessel. The 400-volt distribution board will be delivered in week 33.

For more information, please visit: <http://www.NewResearchFleet.nl>