

## Construction RV *Anna Weber-van Bosse*



### Progress report #7: September 2023

## INTRODUCTION

When it is complete, the RV *Anna Weber-van Bosse* will serve as the ocean-going research vessel for the Netherlands' national research fleet. The fleet is owned and operated by the National Marine Facilities (NMF), a department of the Royal Netherlands Institute for Sea Research (NIOZ). The NMF fleet consists of three vessels capable of conducting research from the shallow coastal waters out into the open ocean.

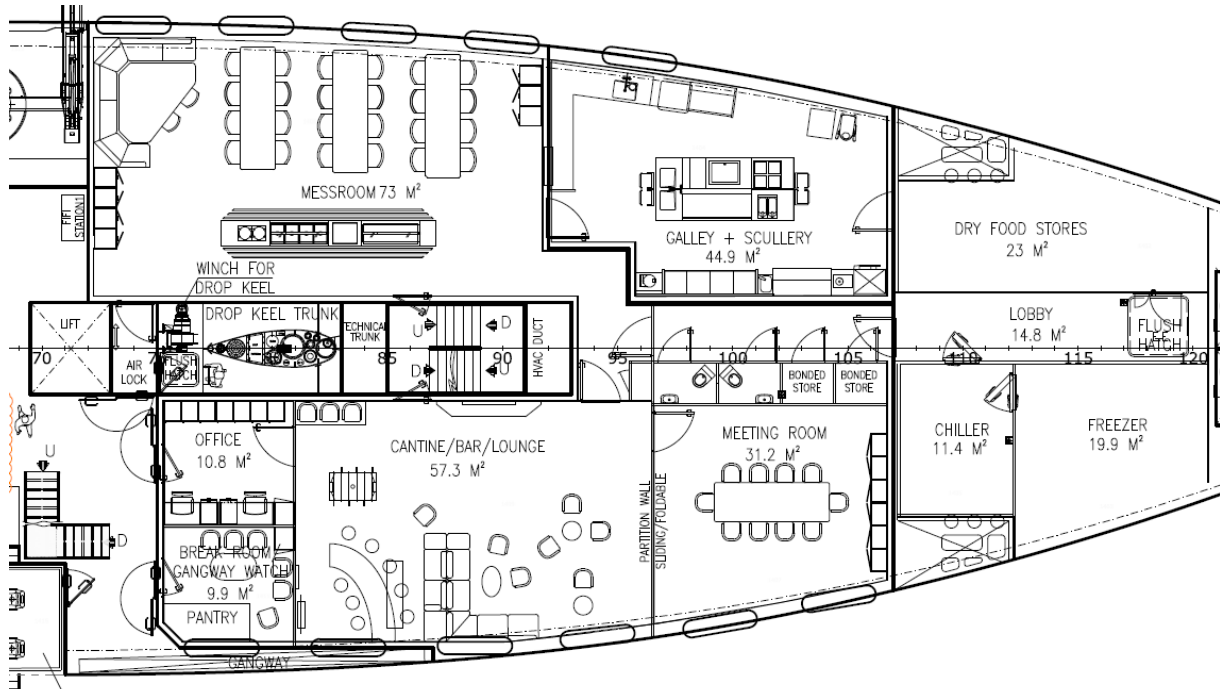
As we explained in last month's progress report, each month we will explain part of the vessel's technical components until construction actually begins on the vessel. Last month, we provided a brief overview of the on-board electrical systems. This month, we will describe the facilities available for the crew and scientists aboard the vessel. This will also be the last technical update, because construction is expected to begin in October. From that point on, the monthly report will focus on the construction progress.

The vessel will be equipped with the facilities necessary to ensure the comfort and well-being of the full complement of passengers and crew living aboard the vessel. That includes up to 16 crew members, depending on the voyage, and a maximum of 31 marine or oceanographic researchers. All of the cabins on board will be designed in accordance with the NIOZ fleet interior design brief. The same styling and colours will be used on all of the new additions to the NIOZ fleet.

The cabins for the crew and passengers are located on several decks aboard the vessel. The crew all have their own one-person cabins, but the scientists may stay in either one- or two-person cabins. All of the cabins meet the building specifications and the standards specified in the Maritime Labour Convention (MLC).

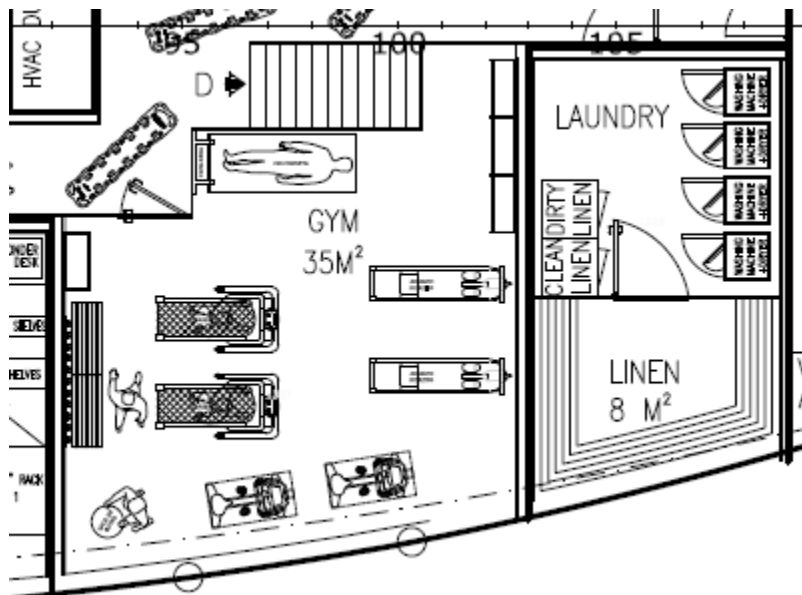
The vessel will feature a spacious galley with all the necessary appliances, next to a pantry to store dry goods. A separate refrigerator and freezer will be installed to store fresh food products. These storage areas can be supplied via a hatch designed for that purpose on the foredeck. The vessel's messroom will be large enough to host 32 people and a buffet.

The vessel will also feature a spacious relaxation room, where the ship's complement can watch TV or play games when off duty. The conference room next to the relaxation room will be equipped with a large screen, and can also serve as a recreation area or on-board cinema if the cruise allows. All of the cabins will have an individual entertainment system operated via the television screen. Depending on the selected programme, the screen can display information from the navigation system, output from the scientific instruments (CTD, winches, etc.) or play music or films from the on-board library. The plans also include a fitness area with a wide selection of machines to offer the ship's complement a thorough workout.



Deck, showing the messroom, galley and relaxation area

C



Gym on D Deck

## A LOOK BACK OVER THE PAST MONTH

As we explained in last month's update, there are several choices that need to be made regarding the routing of the vessel's exhaust gases. The shipyard has implemented the final draft design, which has resulted in a better, more reliable system. The yard will continue to elaborate this design over the coming month.

The completion of the basic design phase has been delayed somewhat due to the shipyard's late response to several items on the agenda. The yard will have to do its best to catch up to schedule. The basic design phase is now expected to be complete in the second or third week of October, rather than late September as originally planned. This is not expected to have an effect on the rest of the schedule at the moment.

The NIOZ hosted the annual Science Day event on 26 September. The entire Dutch marine research community was invited to participate in discussions about the planned RV Anna Weber-van Bosse. The scientists in attendance could provide feedback on the current design while it can still be optimised to meet the needs of the scientific community and its intended purpose. During the Science Day event, representatives from the shipyard and suppliers of the deck equipment and scientific sensors also came to the NIOZ to talk about the systems and answer questions. The participants also discussed the various laboratories on board and the users' preferences. These discussions resulted in some new agreements and action items for further development.

Our steel and welding inspector visited the shipyard to check the welding procedures used to build the vessel. Everything was found to be in order. During a later phase of the project, the inspector will also check the certificates of the welders working on our vessel.

## PROGRESS

The engineering work is still running behind schedule for the completion of the basic design phase and the planned start of construction. The delay is due to the shipyard project manager going on maternity leave. The yard had not made arrangements to compensate for her absence, and serious discussions have been held to hold the yard accountable.

As we explained above, the basic design phase will be completed later than planned. This will not have an effect on the progress of the project as a whole, but the NIOZ will have to monitor the situation to prevent further delays. The yard has submitted a new schedule to ensure that the project is complete within the agreed-upon term.

## SCHEDULE FOR THE MONTH AHEAD

The next month will see the delayed completion of the basic design phase. There are still some items that the shipyard must deal with before the NIOZ can grant approval.

The official ceremony to mark the start of construction is scheduled for 11 October, and the laying of the keel for the NIOZ and the classification society will take place in late December.

The site team will make another visit to the shipyard in the second week of October for the regular meeting and the start of construction. During this visit, the team will also visit Armon's steel working company to check its procedures and the traceability of the certification.

For more information, please visit: <http://www.NewResearchFleet.nl>