

Construction RV *Wim Wolff*



Progress report #19: August 2022

The RV *Wim Wolff* is a new shipbuilding project for the Dutch national research fleet. The fleet is owned and operated by the National Marine Facilities (NMF), a department of the Royal Netherlands Institute for Sea Research (NIOZ). The NMF fleet consists of three vessels capable of conducting research from the shallow coastal waters out into the open ocean.

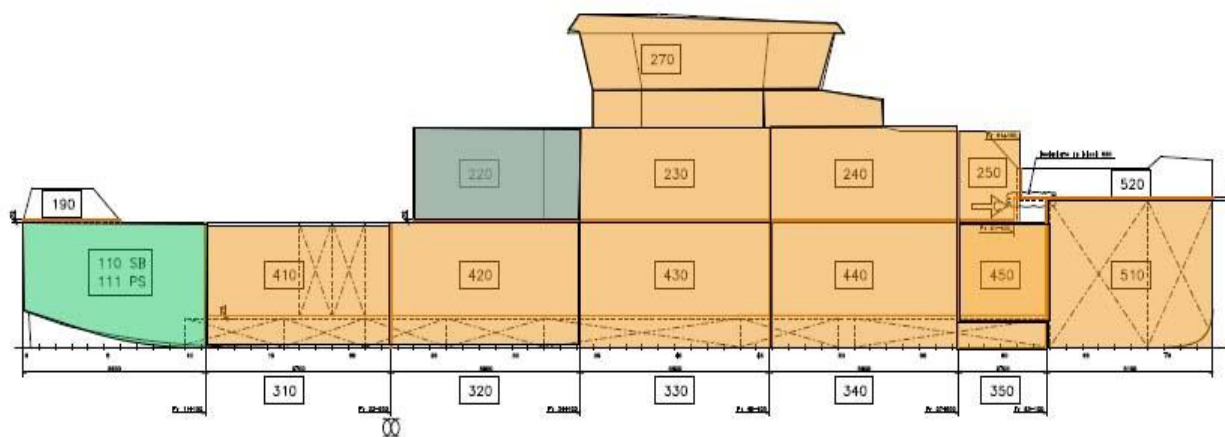
The RV *Wim Wolff* is intended to replace the Wadden Sea research vessel RV *Navicula*, and with its shallow draught of 1 meter it is specifically designed for overnight voyages for research in the Wadden Sea, the Zeeland delta or the coastal zone.

With a permanent crew of four, the RV *Wim Wolff* will offer state-of-the-art facilities for a maximum of 12 passengers, and is equipped with onboard dry and wet lab facilities. The vessel also has room for two customised lab containers on the working deck.

The RV *Wim Wolff* will be built by Thecla Bodewes Shipyards (TBSY) in Harlingen, and is scheduled for delivery in the 1st quarter of 2023.

Hull construction

The hull of the RV *Wim Wolff* is composed of several sections, which are being built at different locations by three Frisian shipbuilders. The individual sections will then be joined together by N. Dijkstra in Harlingen.



State of affairs in late August. The RV Wim Wolff's hull sections, with the fully assembled sections shown in orange, the separate completed sections shown in dark green and the sections still under construction in light green. Sections shown in white have not yet begun construction. ©FH

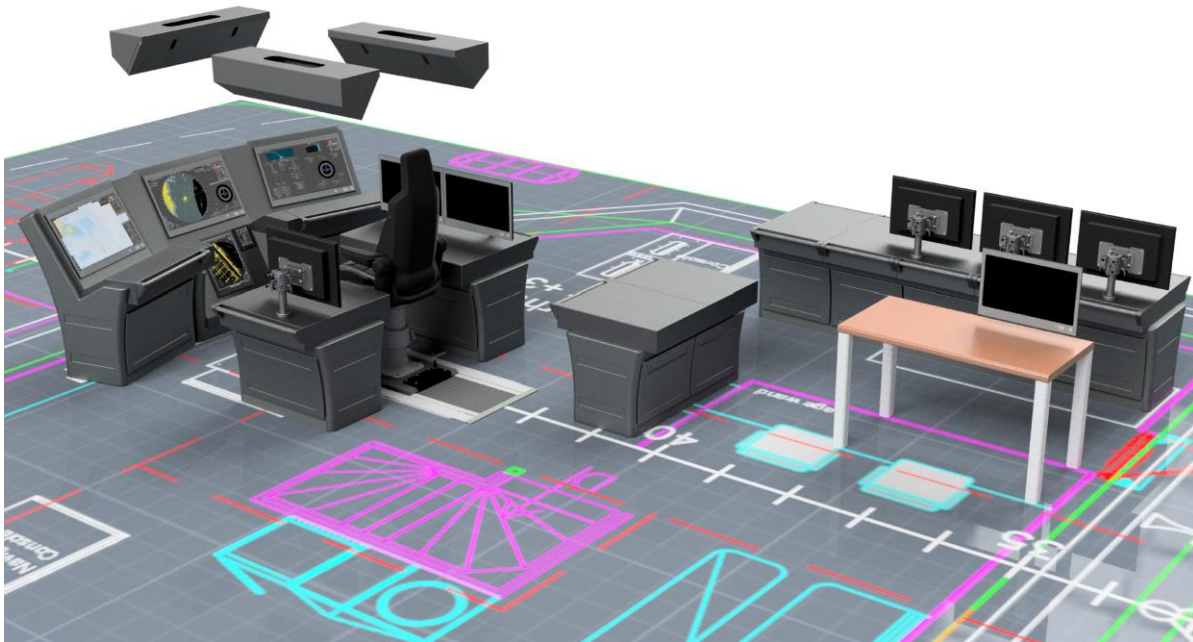
The work on the hull was interrupted due to the summer holidays in August, so the hull is in the same general state of completion as it was in July 2022.

Construction will soon begin on the last sections 190 and 520.

All of the interior details are currently under development, so that finishing work can begin as soon as the vessel arrives at the final assembly location.

The design brief specifies the general functional descriptions of the various spaces and functions, but the final implementation and layout will be determined once a decision has been made regarding the choice of installations. This often involves compromises to make the best use of the limited space available.

Two examples are illustrated below: the bridge and the galley. Preliminary and revised blueprints are already available for both facilities, and every possible detail will be filled in over the next few months.



Preliminary sketch of the bridge console aboard the RV Wim Wolff.



Revised sketch of the galley aboard the RV Wim Wolff. The serving hatch to the messroom is shown to the right.

For more information, please visit: www.NewResearchFleet.nl.